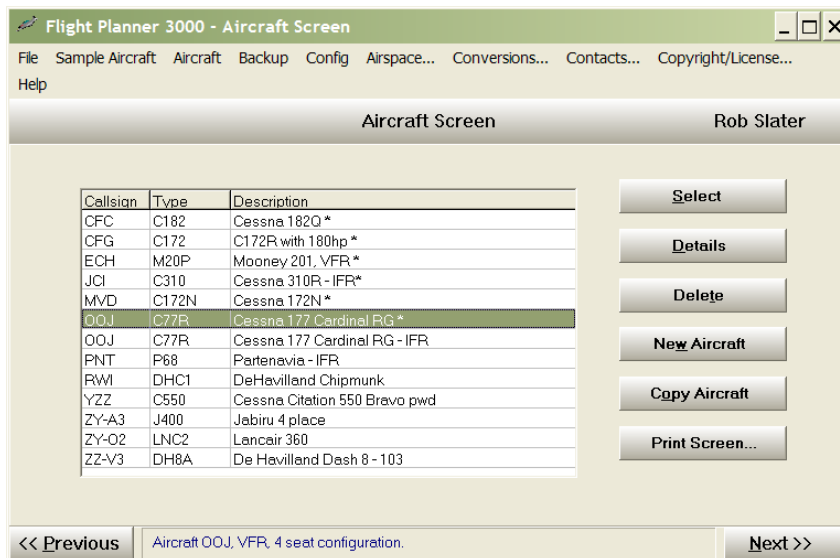


# Flight Planner 3000 - Sample Operation

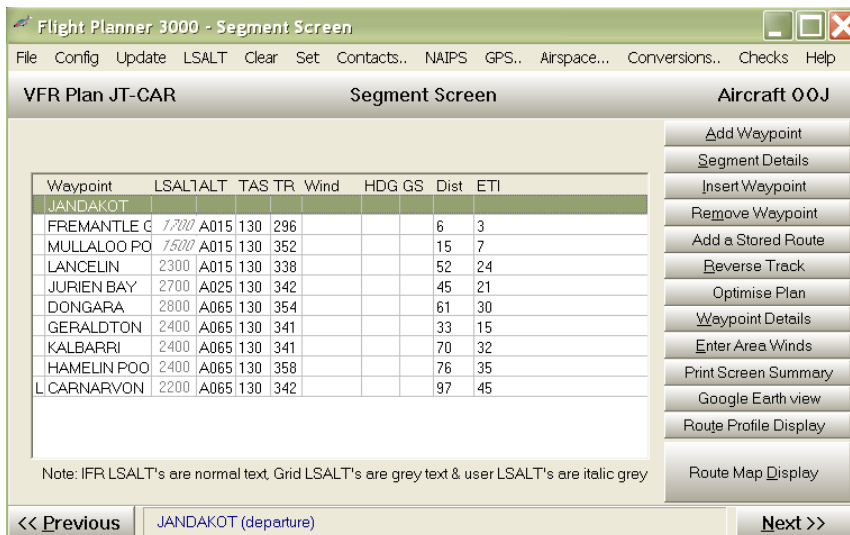
Install the Flight Planner 3000 software (including updates and demo. kits) by running the INSTALL.EXE file downloaded from the WWW. Supported platforms - Windows 98/2000/ME/XP/NT/Vista/Windows7,8 & 10.

Ease of use is one of the most significant features of the Flight Planner software. The sample screens below show the normal usage pattern for the software - the flow from the Aircraft screen to the Segment Screen, the Fuel screen and then to the Options screen.

Firstly select an aircraft from the **Aircraft Screen**....(If you have not set up any aircraft press the *New Aircraft* button to enter your aircraft details **or** select an aircraft from the sample aircraft database by clicking on the *Sample Aircraft* menu at the top of the screen. There are a wide range of sample aircraft types (over 280 including singles, twins, turbine aircraft, jets, warbirds, and helicopters) available.

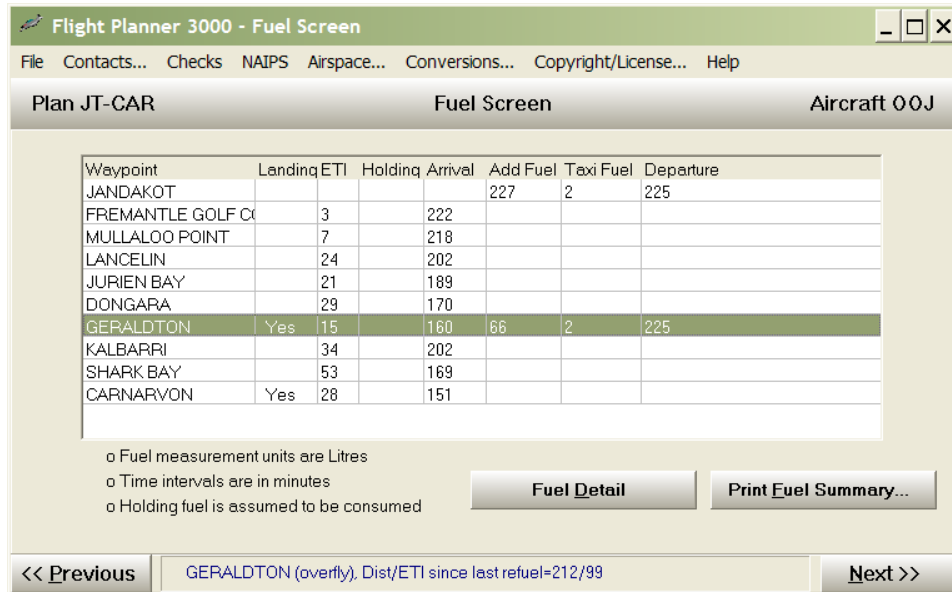


Press the **Next >>** button (bottom Right hand corner) to move on to the **Segment Screen**.

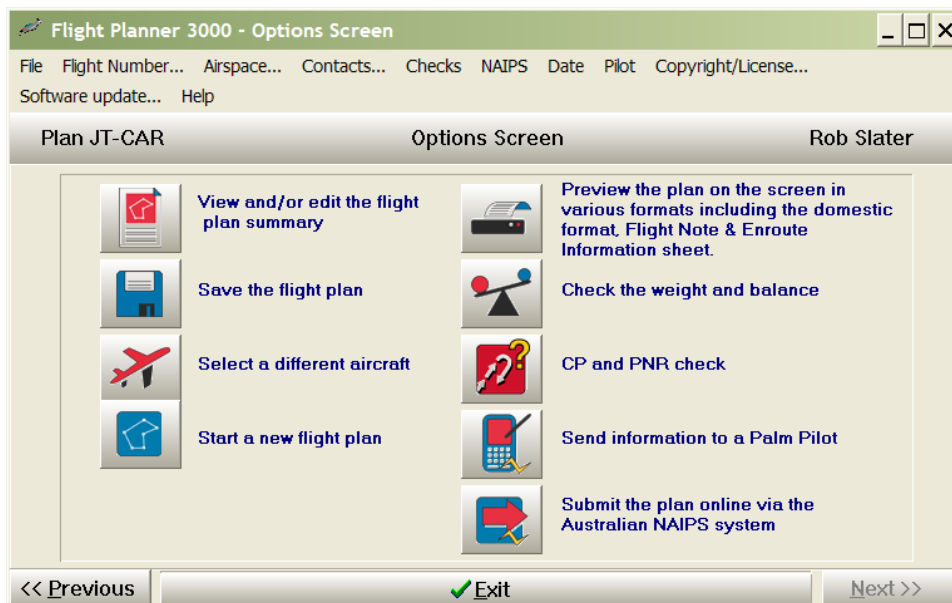


The route is nominated by pressing the **Add Waypoint** button until the route is complete. Use the (fully automatic) NAIPS download facility at this stage to get weather and NOTAMS specific to this flight (available in Australia only).

Press the **Next >>** button on the **Segment Screen** to move to the **Fuel Screen**....



Nominate departure, taxi, holding fuel, check the fuel used and then move onto the **Options Screen** by pressing the **Next >>** button....

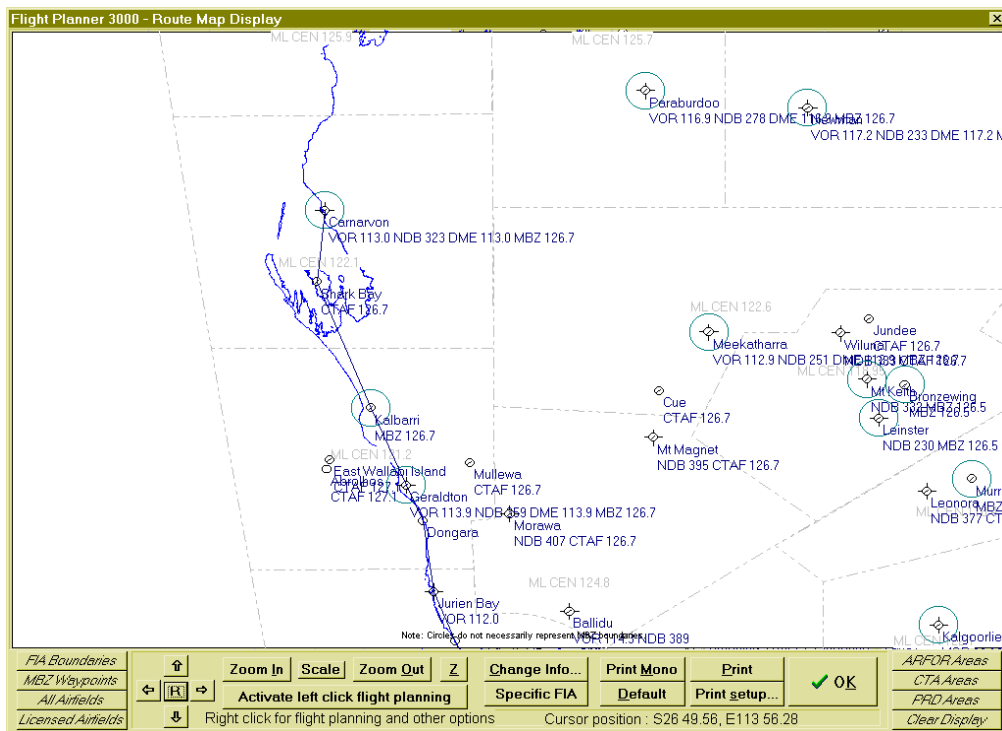


The flight plan is complete! Preview/modify it on the screen prior to printing (or faxing) it or submitting it directly to NAIPS, saving it, checking the weight & balance, changing aircraft or checking the CP & PNR for the flight. Or you can press the **Previous >>** button to go backwards through the above screens to modify any aspect of the flight plan.

We recommend using the NAIPS interface to send the domestic flight notification to the briefing office, and printing the detailed flight plan sheet (or the flight summary sheet) plus the Enroute Information sheet for use in the cockpit.

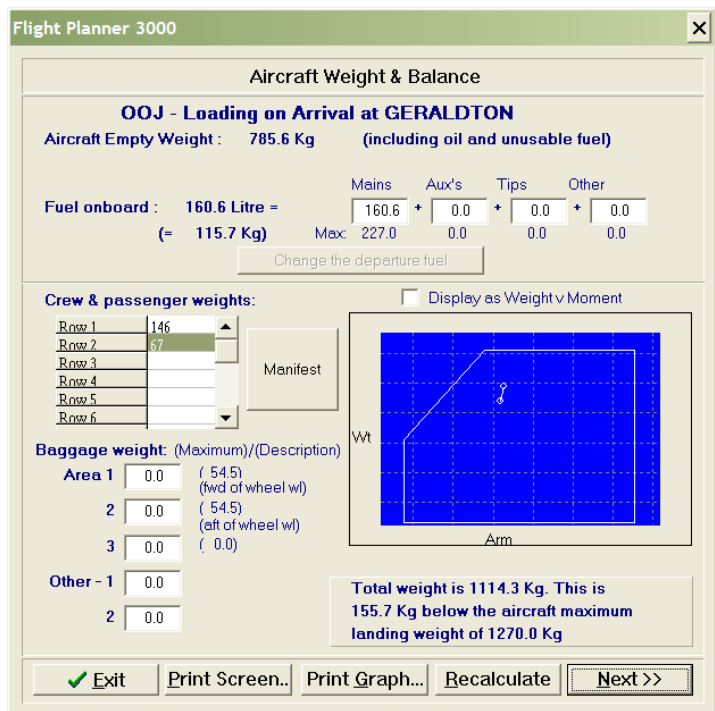
**Flight planning is this simple with Flight Planner 3000!**

The software also contains extensive graphics displays that can have a variety of information overlaid. The **Route Map Display** below shows the FIA boundaries and licensed airfields for a flight. Press the **Route Map Display** button on the **Segment Screen** and add the detail you require. These displays are full screen, and can be printed for reference during the flight.



This display is extremely flexible! Display airspace for the flight, CTAF's, locations with fuel, grid LSALTS, IFR routes, danger areas, airfields, VFR or IFR reporting points, WAC chart boundaries, ARFOR areas, locations with lights, airfield within a given distance from the route, HF boundaries, WAC chart boundaries, waypoints with fuel or lighting, zoom in and out, even display the runway configuration at landing points!

Weight & balance is easy via the **Graphical Weight and Balance** display – select it from the **Options Screen**.



You can put your passenger/baggage load in and it will tell you how much fuel you can carry!

The software has thousands of airfields with detailed data included. This printed in a convenient one-page format – print it from the **Waypoint Details Screen**.

↑  
N

Derby  
5 nm  
337 degrees

Elevation: 24  
Variation: 2.7E

**DERBY**

Runways:

11/29 1736 metres  
(Bitumen)  
Lighting-  
Electric  
Standby power

05/23 1158 metres  
(Gravel)  
Lighting-  
Portable  
Emergency only

Helipad available

Nav aids:  
NDB 332  
Navaid Ident - DBY  
Morse code -  
.....

Frequencies:  
FIA - 122.1  
MBZ - 126.7  
PAL - 125.3

**Details:**

Name:	DERBY, WA
State/country:	Western Australia
Abbreviation:	YDBY
Latitude/longitude:	S17 22.20 E123 39.63
Status:	Licensed
Owner details:	SHIRE OF DERBY WEST KIMB PO BOX 94 DERBY 6728 T:08 91911706 AH:08 91911479 BP:0418 911113 MOBIL:08 91911135
Fuel availability:	
Comments:	AD NOT AVBL TO ACFT ABOVE 5700KG. LIGHTING: RWY 11/29 MAN BY PRIOR ARRANGE MENT WITH AD OPR:08 91911706 OR 91911479
ARFOR area:	69
Broadcast station:	873
Landing permission:	Not required
AVFAX code:	6902

--- Produced by Champagne PC Services Flight Planner 2000 (5.2b) . This software is licensed to Rob Slater, Champagne PC Services ---

Print copies of the airfields for the flight plus the **Enroute Information Sheet (Options Screen, P button)** whenever you fly. You will have the information you need at your fingertips.

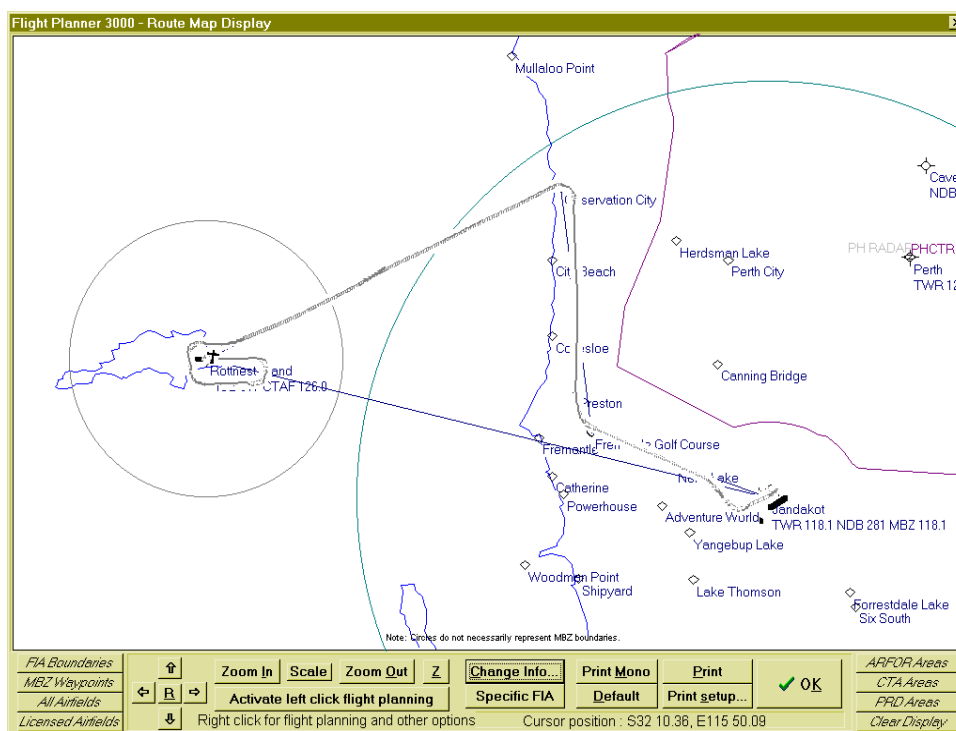
## ENROUTE INFORMATION SHEET

23-Jul-2009

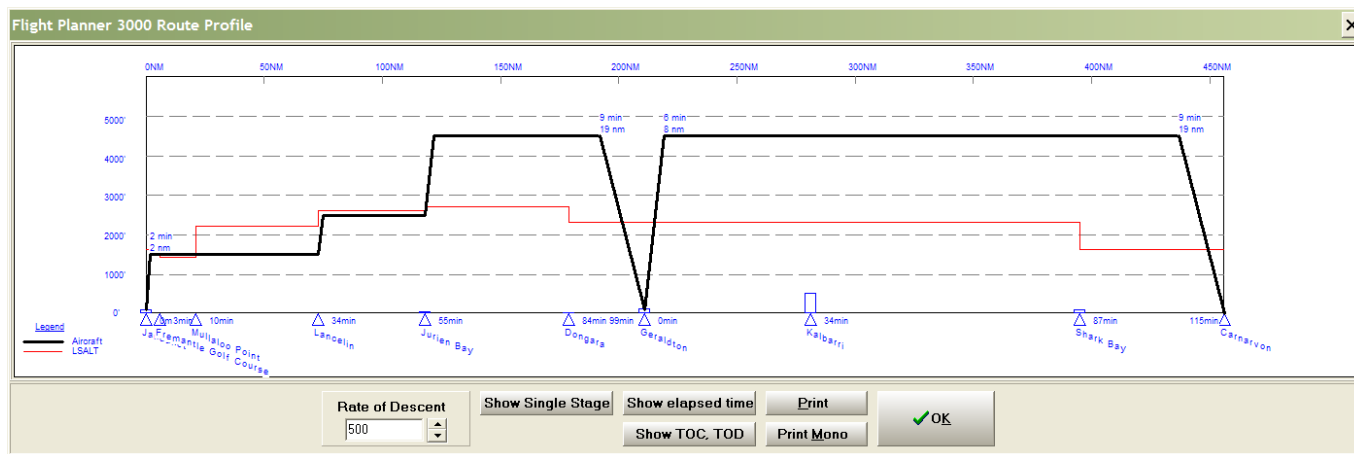
---

**HORSHAM.....(YHSM),VIC** Lat S36 40.18 Lon E142 10.36 Var 10.1E  
 NDB=401 (Range 50/50) PAL=122.3 CTAF=118.8 AWIB=401 B/cast stn|=594  
 Area freq.=125.8 UNICOM=118.8 ARFOR area=30 AVFAX code=3022  
 Morse code: H .... S ... M -- BOD: 21:10 EOD: 08:11 (UTC)  
 Runway 08/26 1322 metres, Bitumen, width 30 Elevation 445 feet (licensed)  
 Runway 17/35 790 metres, Sand, width 18  
 Caution: gliding ops hj jf. Gliders opr  
 wi rws. Lit obst elev 1126ft, 4nm NE ad.  
 Unlit obst elev 647ft 3nm ESE ad.  
 Accom: Motel 03 5382 0144 or 03 5382 0191  
 Facilities: Telephone available.  
 Fuel: T:0417 501624 BP cardswipe bowser

Flight Planner 3000 also has inbuilt support for GPS units that run the Garmin and/or the NMEA protocol. This includes all the Garmin units and a number of others. Upload waypoints from the flight plan plus bulk waypoint uploads and live GPS moving map support. Have your real time aircraft position, speed and altitude displayed on the Flight Planner **Route Map Display!** Right click on the **Route Map Display** and select GPS to activate the full range of GPS facilities in the software.



The Route Profile display (below) is a vertical view of your flight showing your climb, cruise and descent sections of the flight, plus the lowest safe altitude for each segment and the top of climb and the top of descent points.



Other advanced feature of Flight Planner 3000 include upload of data (waypoints, aircraft, flight plans) to handheld GPS's and also to Palm Pilot PDA's, the new vertical route profile (showing climb and descent profile), full multi-user network support, option for pilot selection from a list, advanced security features to ensure the integrity of flight planning data, etc.

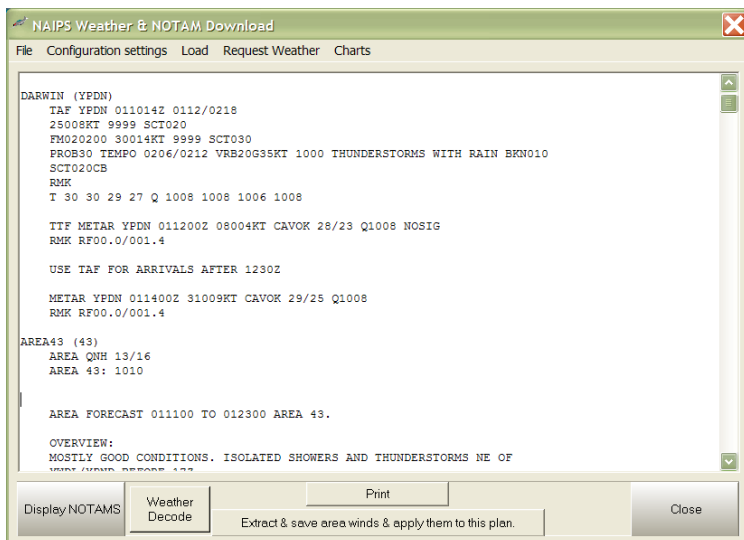
This is only a sample of the functionality and information available in the Flight Planner 3000 software. Further information is available in the **Flight Planner 3000 User Manual** that can be download from the Flight Planner 3000 Product Support Page on our WWW site – <http://www.champagnepcservices.com.au/htmldocs/flightplan2000prodsupport.htm>, or in the **Online Help** provided with the software. To activate the Online Help, click on *Help* at the top of any of the main 5 screens, and select *FP3000 help contents...*

The Flight Planner software has an in-built easy NAIPS interface... Just click on NAIPS at the top of the Segment Screen to directly access NAIPS weather and NOTAMS for the flight (SPFIB), and on the

OPTIONS screen there is a NAIPS drop down menu to submit the flight plan, including Sartime flight notifications.

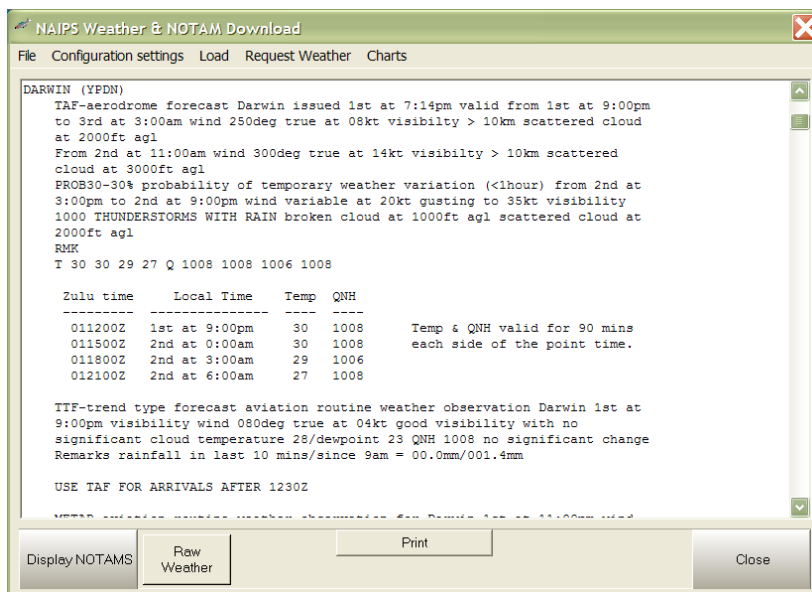
You will be required to have a NAIPS username and password (issued by Airservices) to access NAIPS. Enter this information (click on "ConfigurationSettings>Naips Username/Password" at the top of the NAIPS screen) and you should be able to connect to NAIPS.

One of the very advanced features of the software is the **Weather Decode** – automatically converts a complete NAIPS weather briefing to plain English, including decoding all weather and location abbreviations, decoding date/time fields and converting Zulu time to local time!



Turn This

Into This!



If you are evaluating the Flight Planner 3000 software we recommend downloading the fully operational **demonstration version** from our WWW site - <http://www.champagnepcservices.com.au/htmldocs/flightplan3000.htm>.

Also available is our iPad version of the FP3000 software, called FP5000 and only available from iTunes.

FP5000 implements almost all of the functionality of FP3000 on the iPad platform and the trial version is available as a free download. Search for FP5000 in iTunes.

See our FP5000 WWW page for further information -  
[www.champagnepcservices.com.au/flightplan5000.htm](http://www.champagnepcservices.com.au/flightplan5000.htm)

### **Rob Slater**

- ◆ **Manager, Champagne PC Services**
- ◆ PO Box 565, Leederville WA 6903
- ◆ Tel: 0419 955704 Fax: 08 62678172
- ◆ +61 419 955704 +61 8 62678172
- ◆ Email: [Rob@ChampagnePCServices.com.au](mailto:Rob@ChampagnePCServices.com.au)
- ◆ WWW: [www.ChampagnePCServices.com.au](http://www.ChampagnePCServices.com.au)